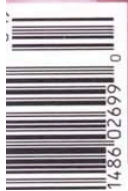
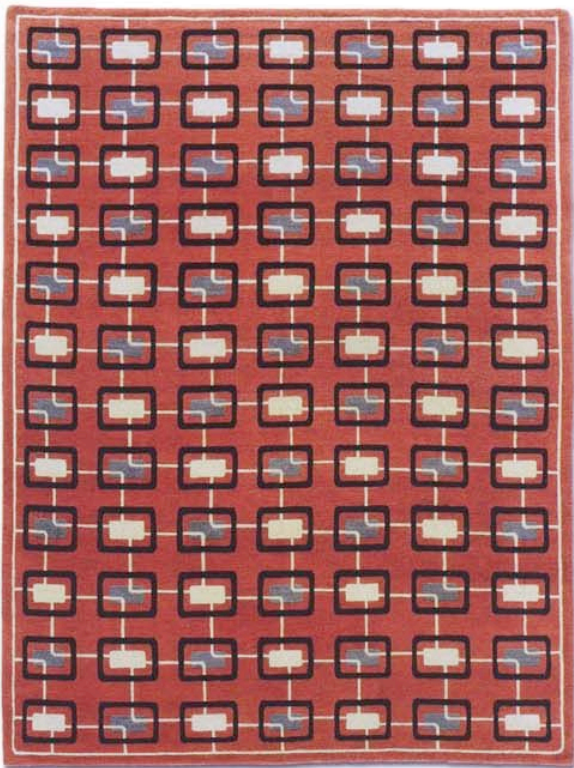


shelter





Architectural salvage at its finest, this lamp from Atelier Branca features a 19th century French tempus fugit patinated bronze-cast medallion as its body. The clean lines of the base and simplicity of the shade instantly update a “classic.” Sold as a set. Atelier Branca, 1325 North State Parkway, Chicago, IL 312.787.6123



This bold coral creation, called Retro, from Warp & Weft allows one to wax nostalgic about 1950s cool while still satisfying the die-hard mid-century modernist within. Woven from hand-spun Tibetan wool. For information, 212.481.4949 warpandweft.com

Flaunting a gracefully arched figure with gold leaf accents, the Menville daybed from Manheim-Ruseau is an appropriate tease for introducing the company’s latest series, Revisions—an evolving collection that explores classical shapes only this time with proportions designed to fit today’s larger lifestyle. To the trade, 972.387.4578

