



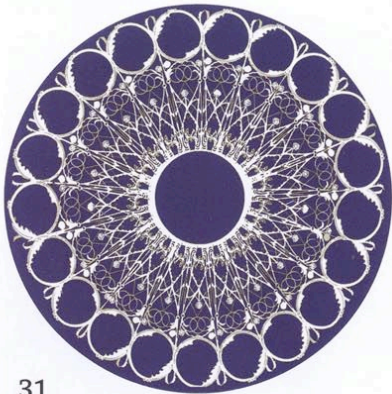
lasvegas home&design

INTERIORS
+
EXTERIORS
+
DETAILS





lasvegas home&design



31



40

"Bamboo-Forest" from Warp & Weir.

BAZAAR

MUST HAVE Get cozy with the latest luxury throws 27

NEW & NOTEWORTHY What's hot and happening on the design scene 30

SCOUTING Black is back and ginkgo adds an organic touch 36

TRADE SECRET Bring art underfoot with designer area rugs 40

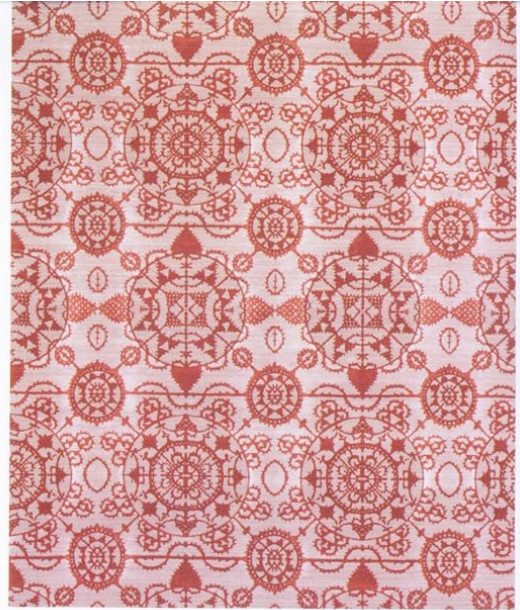
PROFILE Barth White offers the best in faux 44

EPIPUREAN Duck confit makes a decadent autumn meal 46

FINISHING TOUCH Ceramic animal figurines add charm 48

32





Clockwise from left: "Cape Cod" from the Lhasa Collection by Warp & Weft, 212/481-4949, warpandweft.com. "Lace" in grey/red from the New Traditional Collection by Fort Street Studio, 212/925-5383, fortstreetstudio.com. AE210A is a new introduction to the Caspian Collection from Michaelian & Kohlberg, 212/431-9009, michaelian.com. "Tile Perspective" in gold/black/cream is a collaboration with ceramicist Robert Dawson, from Rosemary Hallgarten, 415/456-2588, rosemaryhallgarten.com.

