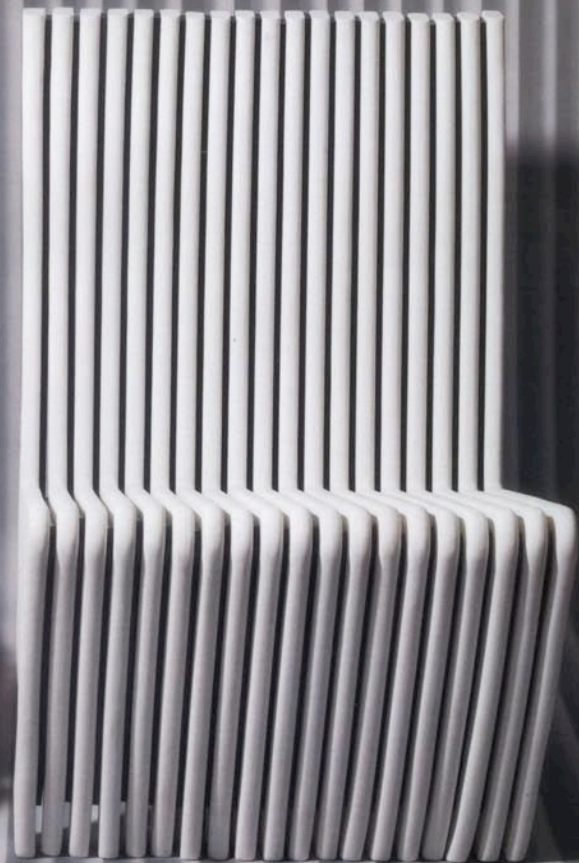
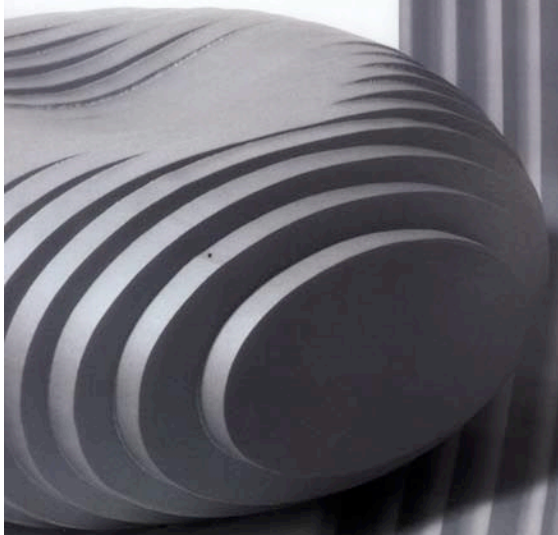


INTERIOR DESIGN[®]

OCTOBER 31
2006

market tabloid
fall line-up

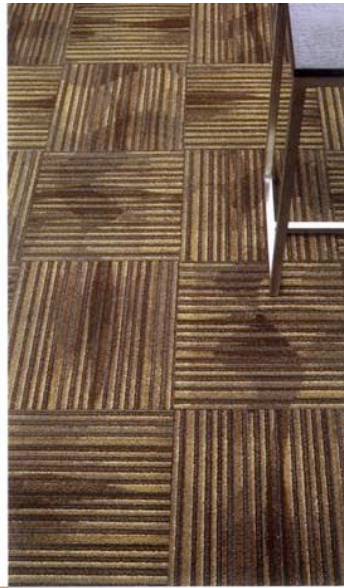


flooring



Emma Gardner

Swirl is hand-knotted in Chinese silk and Tibetan wool with 1/8-inch deep pile. Based on Japanese patterns and fireworks, this lively carpet sets off sparks in three colorways: walnut, grass, or leather, and in three sizes: 6 by 9, 9 by 12, and 12 by 16 feet. 7 West Street, Litchfield, CT 06759; 877-377-3144; emmagardnerdesign.com. **circle 620**



Tandus

Bold enough for large spaces, yet a pleasant surprise in smaller ones, Jhane Barnes based **Turbulence** on the concept of a double woven shirt with large repeating wave patterns and rich multi-colorations. These modular 18 and 36 inch square carpet tiles are made of yarn-dyed and solution-dyed nylon. 311 Smith Industrial Boulevard, Dalton, GA 30721; 800-248-2878; tandus.com. **circle 621**



Blue Ridge

Coupling a modern aesthetic with a homage to the great art deco designers such as Delaunay and Verneuil, **Kaleidoscope** is an elegant 24 inch square carpet tile. It is available in nine colorways: Golden Light, Symmetrical Taupe, Charcoal Fractions, Red Glass, Brown Reflections, Prism Blue, Chocolate Fragments, Mirror Grey, and Green Delight. It is made of solution-dyed nylon. PO Box 507, Ellijay, GA 30540; 800-241-5945; blueridgecarpet.com. **circle 625**

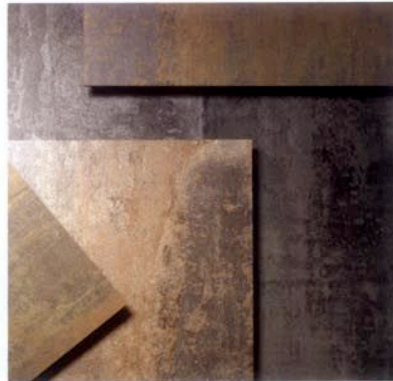


Warp & Weft

The delicate chrysanthemums and peonies of a 16th century Chinese silk fragment are re-interpreted in satiny Tibetan wool and Indian mulberry silk. From the Lhasa collection of contemporary area rugs, **Ming Palmettes** is offered in standard sizes—8 by 10, 9 by 12, or 10 by 14 feet, or in custom sizes. 145 Madison Avenue, New York, NY 10016; 212-481-4949; warpandweft.com. **circle 622**

LG Flooring

Launching four metallic colorways named for moons in the solar system, **Orbit** debuts Cassini, Charon, Callisto, and Titan. The Deco Orbit collection of commercial luxury vinyl flooring features 18 inch square tile with a 0.12 inch gauge. Through Innovision, 18 Sidney Circle, Kenilworth, NJ 07033; 888-291-9903; innovisionflooring.com. **circle 624**



Michaelian & Kohlberg

The neutral palette of this abstract design has the elegance and subtlety of silver birch tree bark, but in a stronger color scheme—it packs power and punch resembling 21st century camouflage. **Baja** is hand-knotted and depicted in the 9 by 11 foot size. 225 East 59th Street, New York, NY 10022; 212-431-9009; michaelian.com. **circle 623**

