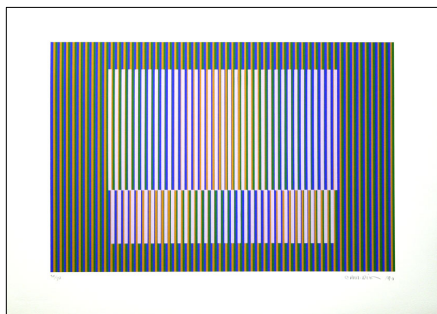


SICARDI GALLERY

Impressions | Abstractions
Sicardi Gallery Exhibition
August 16 – 31, 2013

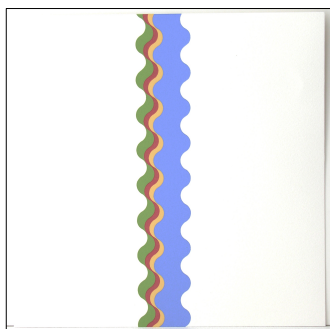
Impressions | Abstractions explores the diverse ways master printmakers from Latin America have used the medium of the print to develop new ideas and forms within traditions of abstraction. Including serigraphs, lithographs, and heliographs created from the 1960s to the present, the exhibition presents rarely-seen examples of historical work, paired with the most-recent explorations of the medium by contemporary masters.



CARLOS CRUZ-DIEZ

Paris-based artist **Carlos Cruz-Diez** (b. 1923, Venezuela) is internationally recognized for his *Physichromies*, *Chromosaturations*, *Chromo-interference Environments*, and large-scale public projects in which he explores the theory and practice of color. His print series of *Chromatic Additions* are created with a variety of techniques, including silkscreen, etching, lithography, and digital printing, and they demonstrate the artist's ongoing research about the behavior of color on a two-dimensional surface. In these works, Cruz-Diez places parallel lines of color equidistant from each other; the placement of the two colors creates the perception of a third color in the viewer's eye.

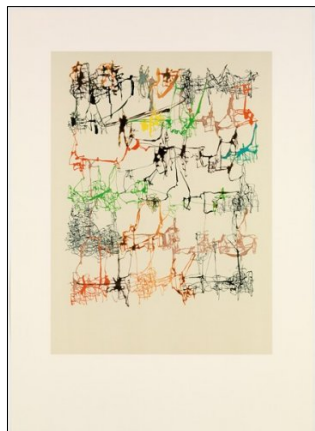
Cruz-Diez has been the subject of numerous solo exhibitions, including *Carlos Cruz-Diez: Color in Space and Time* at the Museum of Fine Arts, Houston (2011) and *Carlos Cruz-Diez: The Embodied Experience of Color* at The Miami Museum (2010). His work is in major public and private collections around the world, including MoMA, New York; Tate Gallery, London; Centre Georges Pompidou, Paris; Victoria and Albert Museum, London; and The Museum of Fine Arts, Houston.



SERVULO ESMERALDO

Sculptor, engraver, draftsman, and kinetic artist **Sérvulo Esmeraldo** (b. 1927, Brazil) studied architecture, mathematics, geometry, and physics in São Paulo in the early 1950s. He spent the years 1957-1977 in France, where he took courses in metal engraving and lithography, regularly visiting the National Library to study works by Albrecht Dürer. His series of serigraphs *Variations sur une courbe* (Variations on a curve) from 1972-1973 are studies of the variations produced by line. Like musical themes, the curves repeat and develop in dialogue with one another.

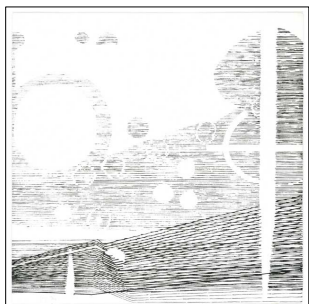
Esmeraldo has had numerous solo exhibitions, at museums including the Museu Nacional de Belas Artes in Rio de Janeiro, the Centro Venezolano de Cultura in Bogotá, and the Museu de Arte Moderna de São Paulo. His work is included in the Kunstmuseum, Basel; Cincinnati Art Museum; Museu de Arte Moderna do Rio de Janeiro; and the Museu de Arte Contemporânea de São Paulo, among other collections.



LEON FERRARI

León Ferrari (1920-2013, Argentina) created heliographs, lithographs, and digital prints marked by an almost calligraphic combination of line and text, and a deep concern with politics and language. Known internationally for his often-provocative social and political critiques, Ferrari made work that was highly critical of war, social inequality, discrimination (sexual, religious, and ideological), and abuses of power. His prints in this exhibition include lithographs made in 2008 and 2009 and heliographs made between 1980 and 2008, each of which expands upon his visual and political concerns and manifests his characteristically elegant draftsmanship.

Ferrari has been the subject of many important exhibitions including *Tangled Alphabets* at the Museum of Modern Art, New York (2009) and *León Ferrari: Obras, 1976-2008* at the Museo de Arte Carrillo Gil, Mexico City (2008). His work is included in collections of MoMA, New York; The Bronx Museum of the Arts, New York; The Museum of Fine Arts, Houston; Museo Carrillo Gil, Mexico City; and Daros Latinamerica, Zurich, among many others.

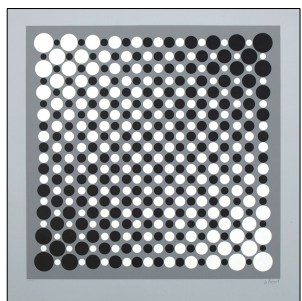


GEGO

Born in Germany, **Gego** (1912-1994) received a degree in architecture in 1938 before emigrating to Venezuela the following year. A sculptor, printmaker, and painter, Gego made works that address problems of architectural and sculptural space. Her *Reticuláreas* ("areas of tiny nets"), for example, use wire to create web-like installations and large three-dimensional forms. The exhibition includes a rare selection of Gego's lithographs from 1966, which demonstrate her superb mastery of line and composition.

Gego has been the subject of many solo exhibitions, including most recently *Gego: Origin and Encounter* at the Americas Society, New York (2012) and *Gego: Between Transparency and the Invisible* at The Museum of Fine Arts, Houston (2007). Her work is

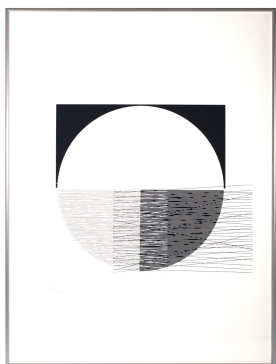
represented in the collections Daros Latinamerica, Zurich; Patricia Cisneros Collection, New York; MoMA, New York; and Museo de Bellas Artes, Caracas, among many others.



JULIO LE PARC

Julio Le Parc (b. 1928, Argentina) settled in Paris in 1958, where he began his investigations into abstraction, kinetic art, and public participation. In 1960, he co-founded the Groupe de Recherche d'Art Visuel (GRAV), an important avant-garde group of optical and kinetic artists, who made ephemeral public projects throughout the city of Paris. Influenced by Russian Constructivism, he made black and white paintings and serigraphs in the mid-1960s, using the limited palette to create a range of optical effects.

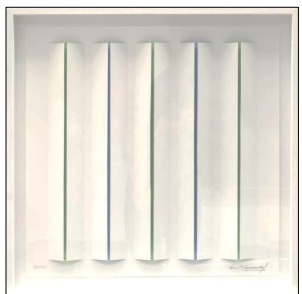
Le Parc's work has been included in many exhibitions, including *le parc lumière* at the Daros Latinamerica Collection, Zurich (2005) and *Julio Le Parc* at Palais de Tokyo, Paris (2013). His work is included in the collections of Tate Gallery, London; MoMA, New York; and The Museum of Fine Arts, Houston, among many others.



JESUS-RAFAEL SOTO

Time and movement are central concerns in the work of painter, sculptor, and kinetic artist **Jesús-Rafael Soto** (1923-2005, b. Venezuela), known especially for his *Penetrables*, sculptures which viewers can walk through and interact with. Upon moving to Paris in 1951, Soto befriended Yaacov Agam, Jean Tinguely, Victor Vasarely, and other artists associated with the Salon des Realités Nouvelles and the Galerie Denise René. His serigraphs from the 1960s and 1970s show the effects of his participation in this group of innovative artists, who also explored modes of perception.

Soto's work has appeared in solo exhibitions including *Visión en Movimiento* at the Museo Tamayo Arte Contemporáneo, Mexico City (2005) and *Soto: Les harmonies combinatoires*, Galerie Denise René. His work is also included in many important collections such as Tate Gallery, London; MoMA, New York; Solomon R. Guggenheim Museum, New York; Hirshhorn Museum and Sculpture Garden, Washington, DC; Museo Tamayo, Mexico City; and Museum of Fine Arts, Houston.



LUIS TOMASELLO

After studying painting in Buenos Aires, **Luis Tomasello** (b. 1915, Argentina) settled in Paris in 1957, where he joined a group of artists researching optical illusion and kinetic art. Known especially for his *Atmosphères chromatoplastiques*, white sculptural pieces that cast changing patterns of light and shadow, Tomasello has worked in print media throughout his long career. His most recent series of lithographs make use of color to create subtle shadows and reflections.

Tomasello's work has been shown in numerous solo exhibitions including *Muestra Antologica* at Centro Cultural Recoleta, Buenos Aires; *Retrospective* at Museo de Arte Contemporáneo Latinoamericano, La Plata, Argentina; and *Luis Tomasello* at Museo Nacional de Bellas Artes, Buenos Aires.