

# Petzel

Maaïke Lauwaert, "Critics' Picks: Willem De Rooij," *Artforum*, March 2015.

## ARTFORUM

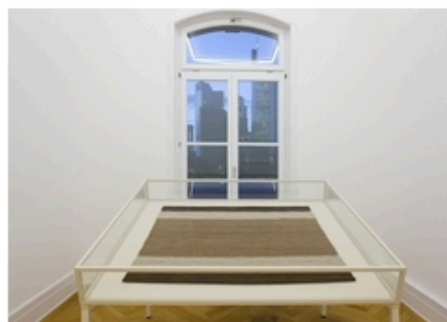
### Willem De Rooij

WELTKULTUREN MUSEUM

Schaumainkai 29-37

February 4, 2015–March 29, 2015

Willem De Rooij's deceptively simple installation is composed of three similar striped blankets, in beige, light brown, and dark brown, displayed in seemingly identical vitrines. But, as the saying goes, the devil is in the details. The one installed in the middle, *Blanket, mantle*, dates back to the nineteenth century and comes borrowed from the Weltkulturen Museum's ethnographic collection. Just the slightest bit fluffy, its uneven edges shimmering lightly from the overhead neon, this is one of only fourteen extant of its kind of Californian blanket. Credited to a variety of indigenous tribes, these status objects are composed of tightly woven duck and goose feathers. Flanking the original are copies commissioned by De Rooij. Titled *Double I* and *Double II* (both 2014–15), these feature straight edges, show no signs of use or age, and are made of camel hair, hence looking less downy and soft than the older version. Although his replicas are clearly expertly made, their main function in the show seems to be to rally around and uplift the original mantle's value.



Willem de Rooij, *Double II*, 2014-2015, camelhair, sheep wool, linen, 45 x 57".

Camels have featured in a sound installation by De Rooij before, as have objects from ethnographic collections, such as feathered ceremonial accoutrements from eighteenth-century Hawaii. The title of the exhibition as a whole, "double double," is also an appropriation, one of a more banal origin: the southwestern fast-food chain In-N-Out Burger's sandwich of the same name. This corporate evocation of the region from which the blanket originates adds a note of fatalistic humor to a historically heavy exhibition.

— Maaïke Lauwaert

<http://www.artforum.com/index.php?pn=picks&id=50584&view=print>