

ASIAN ART

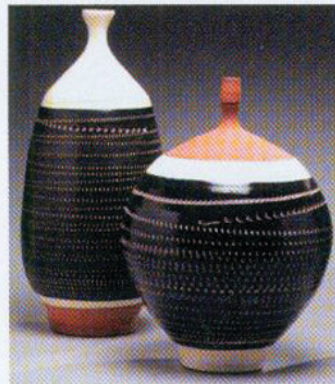
THE NEWSPAPER FOR COLLECTORS, DEALERS, MUSEUMS AND GALLERIES · NOVEMBER 2010 · £5.00/US\$10/€10

KONDO YUTAKA The Transformation of a Traditional Kyoto Family

12 November to 20 January 2011
at Joan B Mirviss Ltd,
39 East 78th Street, New York
NY-10075, tel +1 212 799
4021, info@mirviss.com,
www.mirviss.com.
Catalogue available.

Joan B. Mirviss will present three consecutive exhibitions illuminating the world of post-war contemporary ceramics in Japan. This first show of over 40 works of art, focuses on the work of Kondō Yutaka (1932-83), a remarkable artist and gifted teacher who inspired many of today's established clay artists in Japan, who was the pivotal figure in his ceramic family before his untimely death. Drawn from the family's collection and offered for the first time, fourteen of his works will be seen in the context of his highly unusual heritage, both as a member of a Kyoto *samurai* family and as the son of the celebrated ceramist and designated Living National Treasure for cobalt blue-and-white (*sometsuke*) porcelain, Kondō Yūzō (1902-85).

Perhaps in response to this heavy familial mantle of responsibility, Yutaka created a personal aesthetic vocabulary inspired by extensive foreign travels and teaching



Black-white vases (1973) by
Kondo Yutaka, glazed stoneware,
Joan B Mirviss Ltd

opportunities around the world. Early on, he was captivated by ancient Korean *punch'ong* ware (called *mishima* ware in Japanese) wherein the surface patterning is created through incising or stamping a repeated, intricate design that is then covered with white liquid slip that fills only the depressions after being scraped off the raised surface. He strove to create work that captured the simple beauty of Korean ceramics while simultaneously expressing a uniquely contemporary, poetic, and abstract sensibility. In many ways Yutaka's life and work may be seen as the pivotal element which brought the Kyoto-based Kondō family into the 21st century, as embodied in the achievements of his nephew,

the international artist Kondō Takahiro (b. 1958) who will be represented with numerous recent works illustrating his artistic relationship to the senior artist-members of his distinguished family.

Now the third generation in this celebrated line of clay artists, Kondō Takahiro recently commented, 'My uncle Yūta had a big influence on me, both in his life and through his death, and having the opportunity to remember him through this exhibition, with my work and his shown together, is very meaningful for me. He would have been very pleased too'. He further explained, 'I am very conscious that having passed fifty, I am now just about the same age he was when he died. The effect of his death on my life was that I went from being a table tennis champion to rejoining the world of ceramics that he had so suddenly departed. I find myself thinking of our lives and how they intersected, overlapped and diverged'.

Complementing this show will be the exhibition *Takahiro Kondo: Reflection* at Barry Friedman Ltd, 515 West 26th Street, New York, NY-10001, www.barryfriedmanltd.com, from 12 November to 20 January, 2011