

# ASIAN ART

THE NEWSPAPER FOR COLLECTORS, DEALERS, MUSEUMS AND GALLERIES • MARCH 2013 • £5.00/US\$10/€10

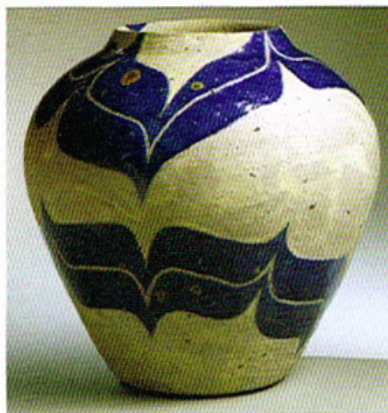
## SEVEN SAGES OF CERAMICS: MODERN JAPANESE MASTERS

Joan B. Mirviss, 25 March to 26 April

This year the gallery is concentrating on a coterie of modern masters: Arakawa Toyozo, Ishiguro Munemaro, Kamoda Shoji, Kawakita Handeishi, Kitaoji Rosanjin, Okabe Mineo and Yagi Kazuo. Joan has selected these artists very carefully, based on the superior work in seven different styles. Arakawa is a Living National Treasure who discovered the origin of the Shino ceramics in 1933. One of his pieces here is a *hanaire* in the form of a bamboo section. Ishiguro, also a Living National Treasure, is represented by a globular

Continued on page 36

## 36 AWCNY Gallery Shows



Large stoneware vessel with blue enamel glazed banding (1976) by Kamoda Shoji (1933-1983), 41.9 x 39.4 cm, Joan B Mirviss

jar with a black-on-brown glaze taken directly from Song Cizhou. Kamoda, however, is strikingly modern with bold pots decorated with either painted or incised bands. Kawakita is more traditional with quasi-natural streaks of ochre over creamy bodies. Rosanjin, whose name is already famous, mastered all the nuances of Bizen, Oribe and other kilns and interpreted them in striking ways of his own. Okabe is a semi-traditionalist and one piece of his in the show is an irregularly crushed water jar covered with a crackled glaze in direct imitation of Southern Song Geyao. Yagi, the original spokesman and central figure of the Sodeisha group, concentrates on objects that are neither purely functional nor purely sculptural nor purely decorative. All-in-all, it promises to be an eye-darting exhibition.

As an adjunct to these potters, there will be prints and scrolls on exhibition, including works by Utamaro and Yoshimura Kokei.

Joan B Mirviss, Ltd, 39 East 78th Street,

4/F, New York 10075, tel 212 799 4021, info@mirviss.com, www.mirviss.com. Hours: Open House Weekend 10-6. Mon-Sat, 10-6. 25 March to 26 April, Mon-Fri, 11-6, otherwise by appointment.

## THE NIGHTLIFE: ENTERTAINMENTS OF THE FLOATING WORLD

Scholten Japanese Art, 14 to 23 March

Katherine Martin has been a director of this gallery ever since its arrival in New York and has made a great success (and reputation) for it, specialising in paintings, woodblock prints (*ukiyo-e* and *shin hanga*) and netsuke. This exhibition, dedicated to the art of evening amusements, will feature images from a variety of leisure activities featured in *ukiyo-e* such as the *kabuki* theatre, *sumo* wrestling, music, party games, famous restaurants, teahouses and the beautiful women of the pleasure quarters. Through the use of both prints and paintings, Scholten has brought this lost world into living colour.

The highlight of the show will be an important small-format six-panel screen (anonymous, 17th century, ink, colour, *gofun* and gold leaf on paper, 64.6 x 207 cm) that depicts the famous female shrine dancer Izumo no Okuni who is credited with originating the *kabuki* theatre (which later became restricted to male actors only) in Kyoto. The screen illustrates the intersection where everyday life in 17th-century Japan meets the 'floating world' – offering its retreat from the realities of that life.

Night life was usually divided among *kabuki*, tea houses and the courtesans. Bringing the masculinity and vigour to life is a fine print by Ippitsusai Buncho of the legendary