

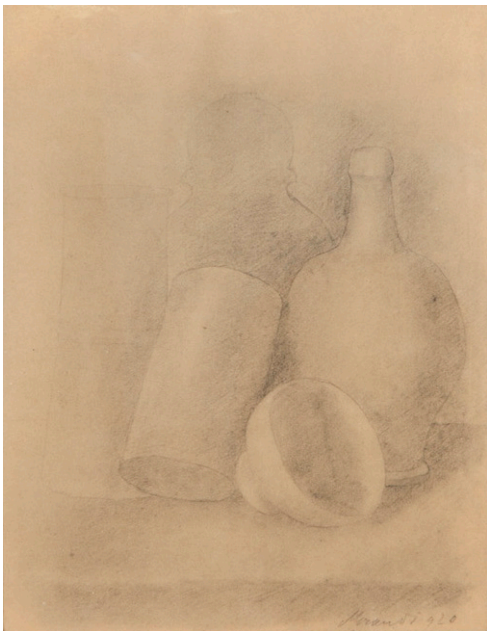
# KOHN GALLERY

galleria  
d'arte  
maggiore  
[www.maggioregam.com](http://www.maggioregam.com)

FOR IMMEDIATE RELEASE  
September 2, 2015

## ***OBJECT/SPACE*** **GIORGIO MORANDI and ROBERT RYMAN**

Opening Reception: Saturday, September 19<sup>th</sup> 2015, 4 – 6pm  
Exhibition on view through October 31<sup>st</sup> 2015



**Los Angeles, CA** — Kohn Gallery is pleased to present a two-person show featuring the work of Giorgio Morandi (1890 – 1964) and Robert Ryman (b. 1930) who, unrelated by both geography and time, each dedicated their art practices to the investigation of object and environment. Using a reductive visual vocabulary, Morandi and Ryman harness the nuances of light and shadow to enhance perception both within the painting and without.

Painted in muted colors, Morandi's meditative compositions beautifully blend still life subject matter and interior space so as to almost dissolve one into the other. The still life becomes nearly abstracted, allowing a harmonious rhythm to dominate the composition as lines soften and resurface from the background.

1227 North Highland Avenue, Los Angeles, California 90038  
t. 323 461 3311 | f. 323 461 3312 | [www.kohngallery.com](http://www.kohngallery.com)

# KOHN GALLERY

galleria  
d'arte  
maggiore

[www.maggioregam.com](http://www.maggioregam.com)



Robert Ryman began making his reductive paintings around 1955, about ten years before Morandi's death. Challenging the boundary between painting and sculpture, these textural works boast complex surfaces of rhythmic light and shadow. Accentuating their inherent objecthood, Ryman's paintings play with the space in which they inhabit, blurring the line between object and environment.

*OBJECT/SPACE* will be on view at Kohn Gallery from September 19 through October 31, 2015. The exhibition, done in partnership with Galleria d'Arte Maggiore G.A.M., Bologna (Italy), will feature rarely-seen oil

paintings by Giorgio Morandi, and a broad selection of Ryman paintings from private collections. The major bodies of work selected for this exhibition span the influential careers of these two artists who, despite being separated by time and geography, each reflect in various ways on the harmonious dialogue between object and space.

## About Giorgio Morandi

Giorgio Morandi, a 20<sup>th</sup> century modern master, tirelessly painted luminous, minimal still lifes that continue to inspire contemporary artists today. Beginning in 1928, Morandi was invited on several occasions to the Venice Biennale and won first prize for painting in the 1948 edition. His work has been exhibited at the Metropolitan Museum of Art, New York (2008); the Tate Gallery, London (2000); the Musée d'Art Moderne de la Ville de Paris (2011); and the Museum of Palazzo Fortuny, Venice (2010-2011), among other countless shows organized at major institutions and galleries around the world.

## About Robert Ryman

For more than five decades, Robert Ryman has been engaged in an ongoing experiment with painting. He constantly seeks to modify his approach, resisting the comfort of tendency and maintaining the freshness of an uncharted territory. From each

1227 North Highland Avenue, Los Angeles, California 90038  
t. 323 461 3311 | f. 323 461 3312 | [www.kohngallery.com](http://www.kohngallery.com)

# KOHN GALLERY



experience Ryman gleans the variables for a revised proposition and the impetus to propel him towards his next move. Since Ryman's first solo exhibition in 1967, his work has been the subject of over 100 solo exhibitions in 12 countries.<sup>1</sup>

## About Kohn Gallery

Since its establishment in 1985 by former Flash Art editor Michael Kohn, Kohn Gallery has presented historically significant exhibitions in Los Angeles alongside exciting contemporary exhibitions, creating meaningful contexts to establish links to the greater art historical continuum. Significant exhibitions include Andy Warhol's *Campbell's Soup Boxes* in December 1986, which opened just weeks before the artist's untimely death; *She: Works by Richard Prince and Wallace Berman* which brought together—for the first time—two generations of leading artists from different coasts; *Bruce Conner: Work from the 1970s*, which inspired the artist's first solo retrospective in Europe at the Kunsthalle Wien and Kunsthalle Zurich (2010). Exhibitions of important New York-based artists have included new works by Christopher Wool, Richard Tuttle, Mark Tansey, Kenny Scharf, and Keith Haring. Kohn Gallery represents important West Coast artists with long careers and rich histories such as Larry Bell, Joe Goode and Lita Albuquerque, as well as the Estates of Bruce Conner, Wallace Berman, John Altoon and Charles Brittin. Finally, Kohn Gallery boasts an exciting roster of emerging and mid-career artists including Simmons & Burke, Rosa Loy, Dennis Hollingsworth, Mark Ryden, Eddie Martinez, Tom LaDuke and Troika.

Visit [kohngallery.com](http://kohngallery.com) for the latest information on upcoming exhibitions.

**Join the “OBJECT/SPACE: Giorgio Morandi + Robert Ryman” conversation on social media by mentioning @KOHNGallery and using the #MorandiRymanKohn hashtag when posting.**

---

<sup>1</sup> Excerpt taken from Robert Ryman's biography found on [www.pacegallery.com](http://www.pacegallery.com)

Artwork 2: Giorgio Morandi, *Natura Morta*, 1920, pencil on paper, 10 ½ x 8 ¼ inches

Artwork 2: Robert Ryman, *Page*, 1998, oil on canvas, 15 x 15 inches

# KOHN GALLERY



Gallery Contact: Kohn Gallery  
Samantha Glaser  
[samantha@kohngallery.com](mailto:samantha@kohngallery.com)  
(323) 461 - 3311

Media Contact: FITZ & CO  
Taylor Maatman  
[taylor.maatman@fitzandco.com](mailto:taylor.maatman@fitzandco.com)  
(646) 589 - 0926

1227 North Highland Avenue, Los Angeles, California 90038  
t. 323 461 3311 | f. 323 461 3312 | [www.kohngallery.com](http://www.kohngallery.com)