

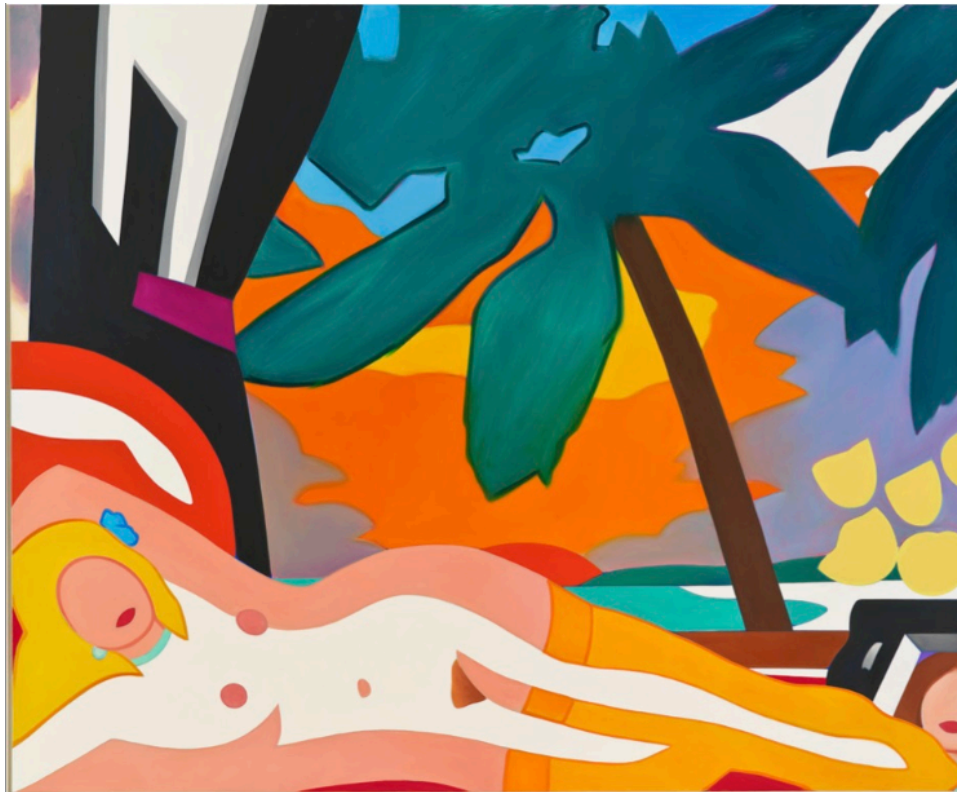
# MITCHELL-INNES & NASH

## MITCHELL-INNES & NASH ANNOUNCES FIRST PAINTING RETROSPECTIVE OF TOM WESSELMANN (1931 – 2004) IN NEW YORK SINCE THE ARTIST'S PASSING

April 21 – May 28, 2016

534 W 26<sup>th</sup> Street, New York

Opening Reception: April 21, 6 – 8 pm



*“With this important exhibition, we hope to show how Wesselmann has filtered the canonical subjects of art—still life, the nude and the landscape—through a unique and personal lens using the media and technical innovation of the sixties, seventies and eighties, offering new possibilities for painting.”*

– Lucy Mitchell-Innes

NEW YORK, September 11, 2015 – **Mitchell-Innes & Nash** announces the first major painting retrospective of **Tom Wesselmann** in New York since the artist's death in 2004. Organized in partnership with the Tom Wesselmann Estate, the exhibition examines Wesselmann's role as the great innovator of the American Pop generation and will include a dozen significant works spanning the artist's career from 1961-2004. The exhibition will be on view at Mitchell-Innes & Nash from April 21 through May 28, 2016.

Tom Wesselmann is one of the leading figures of Pop Art. He is best known for his career-spanning series, “Great American Nude,” which featured female figures in intensely saturated interiors. Wesselmann used collage, assemblage and shaped canvases to usher in a new vocabulary of painting.

The works in the exhibition highlight a number of techniques that Wesselmann pioneered and are largely unseen among his Pop contemporaries. In an interior still life from 1964, Wesselmann incorporates a

# MITCHELL-INNES & NASH

functional fan and a clock into the canvas, pushing the boundaries of collage and assemblage in a sly nod to the notion of the 'represented' object. Collages from the 1960s feature cut-outs from advertising billboards. Also included in the show are Wesselmann's steel-cut works (a technique he helped develop), molded plastic paintings (a technique borrowed from commercial signage and used here in the context of fine art for the first time), and his iconic shaped canvases. A large-scale painting installation will also be featured, underscoring Wesselmann's highly innovative approach in bringing the medium into three-dimensions. From his *Great American Nude* of 1961 to his final *Sunset Nudes* of 2004, the full breadth of Wesselmann's interests will be on view.

Mitchell-Innes & Nash will publish a hard-cover illustrated catalogue in conjunction with the exhibition, which will feature an essay by art historian and writer Michael Lobel.

## About Tom Wesselmann

Tom Wesselmann was born in Cincinnati, Ohio, on February 23, 1931. After receiving a bachelor's degree in psychology from the University of Cincinnati in 1956, Wesselmann moved to New York City to pursue his interests in the arts. He graduated from Cooper Union in 1959 with a degree in fine art, Wesselmann went on to become one of the leading American Pop artists of the 1960s rejecting abstract expressionism in favor of the classical representations of the nude, still life, and landscape. He created collages and assemblages incorporating everyday objects and advertising ephemera in an effort to make images as powerful as the abstract expressionism he admired. Wesselmann worked in New York City for more than four decades. He lived in New York City with his wife, Claire, daughters Jenny and Kate, and son Lane. He died there on December 17, 2004.

## About Mitchell-Innes & Nash

Founded by Lucy Mitchell-Innes and David Nash, who previously headed the worldwide Contemporary and Impressionist & Modern Art divisions of Sotheby's, Mitchell-Innes & Nash places exemplary contemporary artists within a historical context, revealing a continuity of ideas and aesthetic virtuosity from the Modern era through the present day.

Mitchell-Innes & Nash's renowned exhibition program, in both their Madison Avenue and Chelsea locations, fosters excellence within artistic practice, while forging an informed dialogue between emerging and established internationally recognized artists. From acclaimed surveys of 20th century masters, such as Jean Arp, Anthony Caro, Jay DeFeo, Willem de Kooning, Leon Kossoff, Kenneth Noland, Roy Lichtenstein, and Nicolas de Stael, to solo exhibitions of Sarah Braman, Keltie Ferris, Daniel Lefcourt, William Pope.L, Martha Rosler, and Jessica Stockholder, Mitchell-Innes & Nash has proven expertise in both advancing the careers of emerging artists and maintaining the superior standard set by established artists.

Caption: Tom Wesselmann, *Sunset Nude with Big Palm Tree*, 2004. Oil on canvas. 105 by 128 in.

Listings Information: Mitchell-Innes & Nash is located at 534 West 26th Street in Chelsea and 1018 Madison Avenue on the Upper East Side. Tel: 212 744 7400. | Web: [www.miandn.com](http://www.miandn.com) | Email: [josie@miandn.com](mailto:josie@miandn.com)

## Press inquires:

Taylor Maatman

FITZ & CO | Tel: 646 589 0926 | Email: [Taylor.Maatman@fitzandco.com](mailto:Taylor.Maatman@fitzandco.com)