

ENTRYWAY



**Roy Lichtenstein**  
*Mirror I*, 1976  
Painted and patinated bronze, cast 1/3  
44<sup>1</sup>/<sub>2</sub> x 25 x 11<sup>5</sup>/<sub>8</sub> inches (113 x 63.5 x 29.5 cm)  
Private Collection, New York

FIRST FLOOR FRONT CLOCKWISE



**Roy Lichtenstein**  
*Black Flowers*, 1961  
Oil on canvas  
70 x 47<sup>3</sup>/<sub>4</sub> inches (177.8 x 121.3 cm)  
The Eli and Edythe L. Broad Collection,  
Los Angeles



**Jeff Koons**  
*Flower Drawing (Yellow)*, 2003  
Mirror-polished stainless steel with  
transparent color coating  
58<sup>3</sup>/<sub>4</sub> x 58<sup>3</sup>/<sub>4</sub> x 1 inches  
(149.2 x 149.2 x 2.5 cm)  
Collection of the artist



**Tom Wesselmann**  
*Delphinium and Daisies*, 1989/92  
Alkyd on cut-out steel, Edition 13/25  
52 x 15<sup>3</sup>/<sub>4</sub> inches (132.1 x 40 cm)  
Courtesy The Estate of Tom Wesselmann



**Marjorie Strider**  
*Red Roses*, 1962  
Carved wood over Masonite panel  
painted over with acrylic  
63 x 41<sup>7</sup>/<sub>8</sub> x 7 inches (160 x 106.4 x 17.8 cm)  
Courtesy of Hollis Taggart Galleries



**Larry Rivers**  
*Steel Plant II Rubber*, 1959  
Steel  
56 x 45 x 34 inches (142.2 x 114.3 x 86.4 cm)  
Larry Rivers Foundation, Courtesy Tibor de  
Nagy Gallery, New York



**Wayne Thiebaud**  
*Plastic Flowers*, 1983  
(reworked in 2003 and 2006)  
Oil on canvas  
20 x 16<sup>3</sup>/<sub>8</sub> inches (50.8 x 41.6 cm)  
Acquavella Galleries



**Alex Katz**  
*Blue Flag 3*, 1966  
Oil on canvas  
40<sup>1</sup>/<sub>8</sub> x 48<sup>7</sup>/<sub>8</sub> inches (101.9 x 124.1 cm)  
Collection of Richard and  
Dana Kirshenbaum

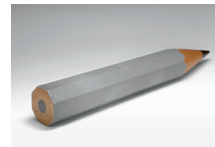


**Andy Warhol**  
*Flowers*, 1964  
Acrylic and silkscreen ink on linen  
48 x 48 inches (121.9 x 121.9 cm)  
Private Collection

FIRST FLOOR BACK CLOCKWISE



**Vija Celmins**  
*Eraser*, 1967  
Painted wood  
4 x 21 x 8 inches (10.2 x 53.3 x 20.3 cm)  
National Gallery of Art, Washington;  
Gift of Edward R. Broida (2005.142.8)



**Vija Celmins**  
*Pencil*, 1966  
Oil on canvas on wood with graphite  
4<sup>1</sup>/<sub>2</sub> x 33<sup>1</sup>/<sub>2</sub> x 4<sup>5</sup>/<sub>8</sub> inches (11.4 x 85.1 x 11.8 cm)  
National Gallery of Art, Washington;  
Gift of Edward R. Broida (2005.142.10)



**Larry Rivers**  
*Covering the Earth*, 1967  
Three-dimensional mixed media construction  
48 x 37<sup>1</sup>/<sub>2</sub> x 18 inches (121.9 x 95.3 x 45.7 cm)  
Mr. and Mrs. Larry Magid



**George Segal**  
*Paint Cans with Wainscoting*, 1983  
Plaster, paint, wood, tin, and glass  
12<sup>1</sup>/<sub>2</sub> x 24 x 16 inches (31.8 x 61 x 40.6 cm)  
Loan courtesy The George and Helen Segal  
Foundation and Carroll Janis



**Edward Kienholz**  
*Cement TV*, 1969  
 Portable tv chassis, chrome antenna,  
 and cement  
 45 x 11<sup>3</sup>/<sub>4</sub> x 9 inches (114.3 x 29.8 x 22.9 cm)  
 Courtesy of Nancy Reddin Kienholz and  
 L.A. Louver, Venice, California



**Roy Lichtenstein**  
*Still Life with Palette*, 1972  
 Oil and Magna on canvas  
 60 x 95<sup>5</sup>/<sub>8</sub> inches (152.4 x 242.9 cm)  
 Acquavella Galleries



**John Wesley**  
*Suitcase*, 1964–65  
 Oil on canvas and leather suitcase  
 14<sup>1</sup>/<sub>2</sub> x 18<sup>1</sup>/<sub>2</sub> x 6<sup>1</sup>/<sub>2</sub> inches (36.8 x 47 x 16.5 cm)  
 Private Collection, New York



**George Segal**  
*Still Life with Guitar & Pitcher (Braque)*,  
 1987  
 Plaster, wood, pencil, and paint  
 48<sup>1</sup>/<sub>4</sub> x 48<sup>3</sup>/<sub>4</sub> x 8<sup>1</sup>/<sub>4</sub> inches  
 (123.8 x 125.6 x 21 cm)  
 Loan courtesy The George and  
 Helen Segal Foundation and Carroll Janis



**Claes Oldenburg**  
*Typewriter Eraser*, 1970  
 Vinyl, canvas, cardboard,  
 painted with spray enamel  
 21<sup>1</sup>/<sub>2</sub> x 12<sup>3</sup>/<sub>4</sub> x 9 inches  
 (54.6 x 32.4 x 22.9 cm)  
 Collection Claes Oldenburg and  
 Coosje van Bruggen



**Andy Warhol**  
*Typewriter (1)*, 1961  
 Casein on linen  
 54<sup>1</sup>/<sub>4</sub> x 70 inches (137.8 x 177.8 cm)  
 Daros Collection, Switzerland



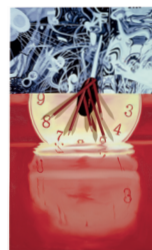
**Jann Haworth**  
*Donuts, Coffee Cups and Comic*, 1962  
 Cotton, thread, kapok, wood  
 (kapok soft sculpture made of 21 parts)  
 25<sup>5</sup>/<sub>8</sub> x 27<sup>1</sup>/<sub>8</sub> x 21<sup>1</sup>/<sub>4</sub> inches  
 (65 x 69 x 54 cm)  
 WAVE Wolverhampton Art Gallery,  
 United Kingdom



**Claes Oldenburg**  
*Soft Juicit—“Ghost” Version*, 1965  
 Canvas filled with kapok, burlap  
 painted with Liquitex on wood base  
 covered with canvas  
 19 x 18 x 16 inches (48.3 x 45.7 x 40.6 cm)  
 Acquavella Galleries



**Stephen Antonakos**  
*Untitled Pillow*, March 26, 1963  
 Pillow, light bulbs, painted wood, metal  
 29 x 23 x 10 inches (73.7 x 58.4 x 25.4 cm)  
 Courtesy the artist and Lori Bookstein  
 Fine Art



**James Rosenquist**  
*The Hole in the Center of the Clock-Night  
 Numbers*, 2008  
 Oil on canvas with wooden dowels  
 43<sup>1</sup>/<sub>2</sub> x 27 x 5<sup>1</sup>/<sub>2</sub> inches (110.5 x 68.6 x 14 cm)  
 Mr. & Mrs. Nathan Bernstein, New York



**Jim Dine**  
*Five Feet of Colorful Tools*, 1962  
 Oil on canvas surmounted by a board  
 on which painted tools hang from hooks  
 55<sup>5</sup>/<sub>8</sub> x 60<sup>1</sup>/<sub>4</sub> x 4<sup>3</sup>/<sub>8</sub> inches  
 (141.2 x 152.9 x 11 cm)  
 The Museum of Modern Art, New York;  
 The Sidney and Harriet Janis Collection, 1967



**Vija Celmins**  
*Lamp*, 1964  
 Oil on canvas  
 24<sup>1</sup>/<sub>2</sub> x 35 inches (62.2 x 88.9 cm)  
 Private Collection,  
 Courtesy McKee Gallery

**FIRST FLOOR BACK** CLOCKWISE, CONTINUED

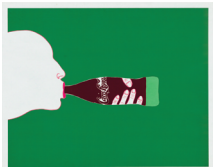


**Vija Celmins**  
*Hot Plate*, 1964  
Oil on canvas  
25 x 35 inches (63.5 x 88.9 cm)  
Private Collection,  
Courtesy McKee Gallery



**Jeff Koons**  
*New Hoover Celebrity III's*, 1980  
Two vacuum cleaners, acrylic,  
fluorescent lights  
56 x 30 x 12<sup>1</sup>/<sub>2</sub> inches (142.2 x 76.2 x 31.8 cm)  
Collection of Jeffrey Deitch

**OVER THE STAIRS**



**Marisol Escobar**  
*Untitled*, 1967  
Silkscreen  
26 x 32<sup>1</sup>/<sub>2</sub> inches (66 x 85.2 cm)  
Courtesy The Paris Review



**James Rosenquist**  
*Dishes*, 1964  
Oil on canvas  
50 x 60 inches (127 x 152.4 cm)  
Promised gift of the Virginia and  
Bagley Wright Collection, in honor of the  
75th Anniversary of the Seattle Art Museum

**SECOND FLOOR LANDING**



**Wayne Thiebaud**  
*Gumball Machine*, 1977  
Gouache and pastel on paper  
24 x 17<sup>3</sup>/<sub>4</sub> inches (61 x 45.1 cm)  
Courtesy of Gretchen and John  
Berggruen, San Francisco



**Andy Warhol**  
*You're In (Silver Coke Bottle)*, 1967  
Silver paint on glass Coke bottle  
with metal cap  
8 x 2<sup>3</sup>/<sub>8</sub> inches (20.3 x 6 cm)  
The Kantor Collection, Los Angeles



**Andy Warhol**  
*Campbell's Soup Can, Chicken  
with Rice*, 1966  
Solid aluminum embossed,  
Edition of 10 in solid aluminum, plus one  
example in solid bronze  
4 inches high (10.2 cm)  
Courtesy of Armand Bartos Fine Art



**George Segal**  
*Untitled (Double Hot Dog)*, 1996  
Plaster and paint  
2<sup>1</sup>/<sub>3</sub> x 9 x 9 inches (5.9 x 22.9 x 22.9 cm)  
Loan courtesy The George and Helen Segal  
Foundation and Carroll Janis



**James Rosenquist**  
*Idea—Middle of the Night*, 2007  
Lightbulb, pencil and electric wiring on  
painted wood  
7<sup>1</sup>/<sub>2</sub> x 12 x 12 inches (19.1 x 30.5 x 30.5 cm)  
Acquavella Galleries



**Jasper Johns**  
*Lightbulb*, 1960  
Bronze, Edition 2/4  
4<sup>1</sup>/<sub>4</sub> x 6 x 4 inches (10.8 x 15.2 x 10.2 cm)  
Collection of Barbara Bertozzi Castelli

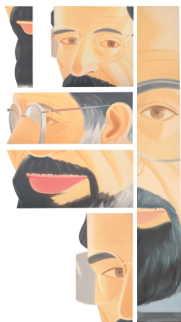


**Roy Lichtenstein**  
*Ceramic Sculpture #4*, 1965  
Ceramic, 9 inches high (22.9 cm)  
Acquavella Galleries



**James Rosenquist**  
*Calyx Krater Trash Can*, 1976  
Eighteen karat gold with black patina,  
Edition of 7  
4 x 3 x 3 inches (10.2 x 7.6 x 7.6 cm)  
Collection of Stephen Saff

SECOND FLOOR FRONT CLOCKWISE



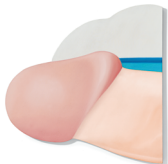
**Alex Katz**

*Allen Ginsberg*, 1985  
Oil on aluminum in six parts, TOP TO BOTTOM:  
*Beard*, 27 x 9 inches (68.6 x 22.9 cm)  
*Face*, 17 x 18 inches (43.2 x 45.7 cm)  
*Profile*, 9<sup>3</sup>/<sub>4</sub> x 24 inches (24.8 x 61 cm)  
*Mouth*, 14 x 30 inches (35.6 x 76.2 cm)  
*Eye*, 32<sup>3</sup>/<sub>4</sub> x 16<sup>3</sup>/<sub>4</sub> inches (83.2 x 42.5 cm)  
*Standing Face*, 72<sup>5</sup>/<sub>8</sub> x 10<sup>1</sup>/<sub>4</sub> x 10 inches  
(184.5 x 26 x 25.4 cm)  
Collection of the artist



**Tom Wesselmann**

*Red Belt*, 1982  
Oil on canvas on shaped plywood  
59 x 59 inches (149.9 x 149.9 cm)  
Courtesy The Estate of Tom Wesselmann



**Tom Wesselmann**

*Seascape #27*, 1967–69  
Oil on shaped canvas  
55<sup>1</sup>/<sub>2</sub> x 55 inches (141 x 139.7 cm)  
Courtesy The Estate of Tom Wesselmann



**John Wesley**

*Table*, 1965  
Acrylic on canvas over wood  
31 inches high (78.7 cm),  
30 inches in diameter (76.2 cm)  
Private Collection, New York



**Wayne Thiebaud**

*Lipstick Row*, 1964  
Oil on canvas  
12<sup>7</sup>/<sub>8</sub> x 18 inches (32.7 x 45.7 cm)  
Private Collection



**Tom Wesselmann**

*Bedroom Tit Box*, 1968–70  
Oil, acrylic, assemblage, and live tit  
6 x 12 x 8<sup>1</sup>/<sub>2</sub> inches (15.2 x 30.5 x 21.6 cm)  
Courtesy The Estate of Tom Wesselmann



**Marisol Escobar**

*Andy*, 1962–63  
Graphite, oil and plaster on wood  
with Andy Warhol's shoes  
56<sup>1</sup>/<sub>2</sub> x 17<sup>1</sup>/<sub>4</sub> x 22<sup>1</sup>/<sub>2</sub> inches (143.5 x 43.8 x 57.2 cm)  
Acquavella Galleries



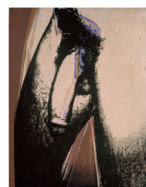
**Wayne Thiebaud**

*Tie Tray*, 1969  
Oil on canvas  
30 x 24 inches (76.2 x 61 cm)  
Acquavella Galleries



**Jasper Johns**

*High School Days*, 1964  
Sculp-metal over plaster with mirror  
4<sup>1</sup>/<sub>4</sub> x 12 x 4<sup>1</sup>/<sub>2</sub> inches (10.8 x 30.5 x 11.4 cm)  
Philadelphia Museum of Art:  
Collection of the artist



**Andy Warhol**

*Untitled (Male Torso)*, 1977  
Synthetic polymer paint and  
silkscreen inks on canvas  
14 x 11 inches (35.6 x 27.9 cm)  
Collection of John Richardson



**Tom Wesselmann**

*Study for Mouth #10 (Expo 67 Mouth)*, 1966  
Liquitex on gesso panel, two sections  
7 x 6<sup>5</sup>/<sub>8</sub> inches (17.8 x 16.8 cm)  
Courtesy The Estate of Tom Wesselmann



**Tom Wesselmann**

*Seascape (Foot)*, 1967  
Three-color silkscreened, vacuum-formed  
Plexiglas, Edition Proof  
14<sup>1</sup>/<sub>2</sub> x 13 x 5<sup>5</sup>/<sub>8</sub> inches (36.8 x 33 x 1.6 cm)  
Courtesy The Estate of Tom Wesselmann



**Andy Warhol**

*Diamond Dust Shoes*, 1980–81  
Acrylic, silkscreen ink and  
diamond dust on canvas  
90 x 70 inches (228.6 x 177.8 cm)  
Private Collection



**George Segal**

*Two Hands on Buckle*, 1978  
Plaster and paint  
8<sup>3</sup>/<sub>4</sub> x 13<sup>1</sup>/<sub>4</sub> x 10<sup>1</sup>/<sub>4</sub> inches (22.2 x 33.7 x 26 cm)  
Loan courtesy The George and Helen Segal  
Foundation and Carroll Janis

**SECOND FLOOR FRONT** CLOCKWISE, CONTINUED



**George Segal**  
*Untitled (Right Hand under Left Breast)*, c. 1970  
Plaster and paint  
14½ x 11 x 4 inches (36.8 x 27.9 x 10.2 cm)  
Loan courtesy The George and Helen Segal Foundation and Carroll Janis



**Claes Oldenburg**  
*Tilting Neon Cocktail*, 1983  
Stainless steel and cast aluminum; painted with acrylic, Plexiglas, Edition 3/50  
19 x 7 x 7 inches (48.3 x 17.8 x 17.8 cm)  
Courtesy of Gretchen and John Berggruen, San Francisco



**Tom Wesselmann**  
*Maquette for Dropped Bra (Sculpture)*, 1978  
Liquitex on bristol board  
9¾ x 18 x 6½ inches (24.8 x 45.7 x 16.5 cm)  
Courtesy The Estate of Tom Wesselmann



**Marjorie Strider**  
*Green Horizontal*, 1964  
Acrylic paint, laminated pine on Masonite panel  
24½ x 62¼ x 5 inches (62.2 x 158.1 x 12.7 cm)  
Courtesy of Hollis Taggart Galleries



**Tom Wesselmann**  
*Smoker #3 (Mouth #17)*, 1968  
Oil on shaped canvas  
71½ x 67 inches (181.6 x 170.2 cm)  
Courtesy The Estate of Tom Wesselmann



**Claes Oldenburg**  
*Pie à la Mode*, 1962  
Muslin soaked in plaster over wire frame, painted with enamel  
20 x 13 x 19 inches (50.8 x 33 x 48.3 cm)  
The Museum of Contemporary Art, Los Angeles; The Panza Collection (88.9)

**SECOND FLOOR BACK** CLOCKWISE



**Wayne Thiebaud**  
*Sucker Tree*, 1962  
Oil on canvas  
24⅞ x 18 inches (61.3 x 45.7 cm)  
Acquavella Galleries



**Tom Wesselmann**  
*Still Life #34*, 1963  
Acrylic and collage on panel  
47½ inches diameter (120.7 cm)  
Private Collection



**George Segal**  
*Cézanne Still Life #4*, 1981  
Painted plaster, wood, and metal  
57 x 48 x 24 inches (144.8 x 121.9 x 61 cm)  
Acquavella Galleries



**Claes Oldenburg**  
*Soft Fur Good Humors*, 1963  
Fake fur filled with kapok, wood painted with enamel, four units  
Each, 2 x 9½ x 19 inches (5.1 x 24.1 x 48.3 cm)  
Private Collection



**James Rosenquist**  
*Orange Field*, 1964  
Oil on canvas  
32 x 36 inches (81.3 x 91.4 cm)  
Private Collection



**James Rosenquist**  
*Coenties Slip Studio*, 1961  
Oil on canvas  
33 x 43 inches (83.8 x 109.2 cm)  
Collection of James Rosenquist



**Tom Wesselmann**  
*Little Still Life #18*, 1964  
Acrylic, collage, and assemblage on board with working radio  
5¾ x 6½ x 2⅝ inches (14.6 x 16.5 x 6.7 cm)  
Courtesy The Estate of Tom Wesselmann



**Wayne Thiebaud**  
*Hot Dog with Mustard*, 1964  
Oil on canvas  
10 x 12 inches (25.4 x 30.5 cm)  
Private Collection



**Andy Warhol**

*Del Monte Peach Halves*, 1964  
 Silkscreen ink and house paint on plywood  
 9<sup>3</sup>/<sub>2</sub> x 15 x 12 inches (24.1 x 38.1 x 30.5 cm)  
 Private Collection

*Campbell's Tomato Juice*, 1964  
 Silkscreen ink and house paint on plywood  
 10 x 19 x 9<sup>1</sup>/<sub>2</sub> inches (25.4 x 48.3 x 24.1 cm)  
 Private Collection

*Heinz Tomato Ketchup*, 1964  
 Silkscreen ink and house paint on plywood  
 8<sup>1</sup>/<sub>2</sub> x 15<sup>1</sup>/<sub>2</sub> x 10<sup>1</sup>/<sub>2</sub> inches (21.6 x 39.4 x 26.7 cm)  
 Private Collection

*Brillo Soap Pads*, 1964–69  
 Silkscreen ink on plywood  
 20 x 20 x 17 inches (50.8 x 50.8 x 43.2 cm)  
 Private Collection



**Ed Ruscha**

*Lemon Drops*, 1962  
 Oil and graphite on paper mounted on board  
 11<sup>1</sup>/<sub>4</sub> x 10<sup>1</sup>/<sub>8</sub> inches (28.6 x 25.7 cm)  
 Acquavella Galleries



**Robert Indiana**

*USA EAT*, 1965  
 Oil on canvas  
 12 x 12 inches (30.5 x 30.5 cm)  
 Private Collection



**Robert Indiana**

*EAT*, 1962  
 Oil on canvas  
 12 x 11 inches (30.5 x 27.9 cm)  
 Private Collection



**Robert Indiana**

*Column: EAT*, 1964  
 Oil and gesso on wood  
 (base by Richard Artschwagger)  
 63<sup>3</sup>/<sub>4</sub> x 13<sup>1</sup>/<sub>4</sub> x 13<sup>1</sup>/<sub>4</sub> inches  
 (161.9 x 33.7 x 33.7 cm)  
 Private Collection, Courtesy  
 Simon Salama-Caro



**Andy Warhol**

*Coca-Cola*, 1962  
 Casein on cotton  
 69<sup>3</sup>/<sub>8</sub> x 54 inches (176.2 x 137.2 cm)  
 Private Collection



**Andy Warhol**

*Three Coke Bottles*, 1962  
 Silkscreen ink and graphite on linen  
 20 x 16 inches (50.8 x 40.6 cm)  
 Collection of the Andy Warhol Museum,  
 Pittsburgh



**Robert Arneson**

*Pei-Pee*, 1964  
 Glazed ceramic  
 9<sup>3</sup>/<sub>4</sub> x 20<sup>3</sup>/<sub>4</sub> x 14<sup>1</sup>/<sub>2</sub> inches (24.8 x 52.7 x 36.8 cm)  
 Private Collection



**Robert Rauschenberg**

*Coca-Cola Plan*, 1958  
 Pencil on paper, oil on three Coca-Cola  
 bottles, wood newel cap, and cast metal  
 wings on wood structure  
 26<sup>3</sup>/<sub>4</sub> x 26 x 5<sup>3</sup>/<sub>8</sub> inches (68 x 66 x 13.7 cm)  
 The Museum of Contemporary Art,  
 Los Angeles; The Panza Collection (86.16)



**H. C. Westermann**

*Trophy for a Gasoline Apollo*, 1962  
 Painted wood  
 24<sup>5</sup>/<sub>8</sub> x 10 inches (62.5 x 25.4 cm)  
 Jane and Ruth Root, United States



**Robert Arneson**

*Hydrox Cookie*, 1966  
 Glazed ceramic  
 6 x 20 x 20 inches (15.2 x 50.8 x 50.8 cm)  
 Collection of halley k. harrisburg and  
 Michael Rosenfeld, New York, NY



**Wayne Thiebaud**

*Three Half Cakes*, 1966  
 Oil on canvas  
 16 x 28 inches (40.6 x 71.1 cm)  
 Courtesy of Gretchen and John Berggruen,  
 San Francisco